

Solutions for
Cleaning & Hygiene



seko

Content

Introduction page 04

Kitchen Hygiene page 06

- Peristaltic Pumps
- Double & Triple systems
- Timed Dosing

Laundry page 14

- Dynamik LR, OPL Basic, Smart Systems
- Wash Series

Surface Cleaning page 20

- Dilution Control
- Cleaning and Disinfection
- Foaming Systems
- Spray Systems
- Refill Range

Additional Information page 30



A Worldwide Group at your service

Globally Present, Locally Active

Our Global presence ensures that we can support our Customers wherever they are. Supported by teams in over 20 countries, as well as by our accredited Partner Distributor network, we ensure professional, local customer support in over 120 countries, with the added benefit of rapid delivery of goods to meet your needs.

All this backed up and supported by a world-class team of Technical Customer Service, able to provide all the back up or technical support needed. With ISO certificated production sites in Europe, the Americas and Asia, we are close to our customers and fully compliant with all local norms both in terms of our product designs as much as our production facilities.

How SEKO works for You

From the spark of an idea, through to the delivery of a solution, SEKO is with you all the way!

SEKO supports its customers in every phase of a project, from the inception of an idea or request, through design and testing to launch and installation. Our in-house research, design and development teams work closely with the local teams, drawing on customer and market inputs. Then using state-of-the-art technologies to optimize costs and using our own specifically designed test benches to ensure rigorous, robust testing, we ensure a quality solution is delivered quickly to market.

No matter which processes and applications are planned SEKO has a solution in the cleaning and hygiene of kitchens and laundries and surfaces of all types in applications like **Offices and Restaurants, Hospitals and Hotels, Retailers and Schools, Car Washes and Swimming Pools, Cooling Towers, Energy, Food & Beverage, Water & Gas Utilities Potable and Waste Water Treatment.**

1 Partnership Philosophy

Being a privately-owned business means that we are here for the long term and can plan projects with and for our Customers, where both parties benefit. It means we can rapidly take decisions to invest our resources to ensure our optimum solutions are delivered.

2 Your Business, Our Solutions

Our extensive product range represents a unique combination of design, development and implementation know how. With a wide and ever evolving range of products and ancillaries, we can offer specific and comprehensive solutions for a variety of industrial applications. Our solutions are conceived to fit seamlessly into your operation, optimizing the processes and applications

3 Uniquely Positioned

SEKO's 3 business units, Cleaning & Hygiene, Water & Industry and Industrial Processes puts us in a unique position to be able to respond to the widest range of business needs, with a broad range that allows you the Customer to deal with just one company, simple.

Cleaning and Hygiene

An ever-evolving set of solutions for your environment

SEKO has always supported businesses facing the commercial challenges that arise from having to ensure the cleanest most hygienic premises, whilst driving costs down and minimizing environmental impact. Today, it has built a worldwide reputation as a leader in the world of Cleaning and Hygiene Dosing and Dilution Solutions. Exploiting our market experience, we design, develop, test and manufacture designs that ensure all our solutions and systems deliver:

Precision and Consistency

Maximizing cost control for chemical dosing, or ensuring the right dilution rate is used, requires advanced technology, impervious to fluctuations in water pressure, to guarantee an effective result, in turn providing the security for a given business brand.

Ease of Use and Installation

As a global company, we are attuned to the differing needs of individual markets. This is why, when we design a new product, we ensure that installation is simple, that we use uniform programming language solutions that are intuitive and easy to understand, in whatever language you speak.

Safety and Reliability

The safety of customers and operators is paramount, requiring the very best in terms of design and features. SEKO's range provides this security. From the locking mechanisms of our SekureDose range through to the IP65 and Nexa 4 enclosures of our warewash systems, safety is at the forefront of our design ethos. Reliability drives good safety, and all SEKO's products are fully tested prior to leaving our warehouse.

Operational Efficiency

Running a business is about making money. To do this, SEKO plays its part. From the affordability of the range of solutions, through to thoughtful design elements like the semi flat pack design of Sekure cabinets to the Transaxle Technology, that improves the lifetime of motors and tubes alike all aimed at reducing operating costs.





Kitchen Hygiene

SEKO's Solutions designed with the Kitchen in Mind

Working alongside Global machine and chemical manufacturers and catering operators SEKO has developed a high-quality range of pumps, designed to keep equipment performing brilliantly. From peristaltic pump systems, designed to deliver precise quantities of chemical, to robust and highly efficient dosing systems for enzyme drain cleaning solutions, we can help keep a catering operation running cleanly and smoothly.

Glasswashers

- Peristaltic dosing pumps

Hood type dishwashers

- Peristaltic dosing pumps
- Double/Triple Dosing systems

Conveyor dishwashers

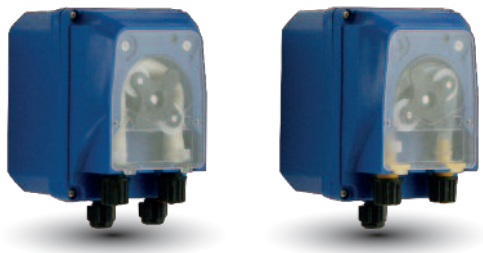
- Peristaltic dosing pumps
- Double/Triple Dosing systems

Timed Control

- Digital or Analogue programmer

Peristaltic Pumps

- Wide spread of flow rates for all types of warewash machines
- Quick and easy installation to save your time
- Low maintenance and robust design
- Wide variety of tubes to adapt to all chemicals
- Wide spread of functions offer maximum flexibility



Peristaltic dosing pumps

SEKO's peristaltic range offer reliable robust and affordable dosing solutions for glasswash machines, hood type and conveyor warewash machines amongst others.

Offering **simple installation** and connection, thanks to a wall mounting bracket and circuit board mounted plugs. **Safety and reliability** is assured thanks to polypropylene enclosures, meeting **IP 65 classification**.

Ease of use and low operating costs are guaranteed, thanks to easy to use trimmer settings, allowing fast and simple configuration and **minimum maintenance** schedules.

PA Model

- Fixed speed peristaltic pump with analogue adjustment of conductivity setpoint
- Equipped with a conductivity probe to enable the dosing
- Doses detergent liquids using a Santoprene squeeze tube
- Flow rate 6 – 9 l/h

PR Model

- Versatile peristaltic pump with analogue dosing speed adjustment
- For use with a detergent, with Santoprene tubing
- For use with rinse aid, using SekoBril tubing, offers high chemical compatibility
- Analogue speed adjustment mechanism
- Flow rate 4 – 7 – 18 l/h for Detergent, 1 l/h for Rinse Aid

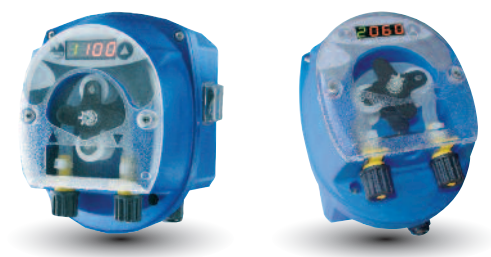
PRT Model

- Fixed speed peristaltic pump with an analogue dosing time adjustment
- Powered via single or double solenoid valves
- 2 setting trimmers enable detergent initial charge (18-180 secs) and re-charge (2-15 secs)
- Flow rate 6 – 9 l/h

PM Model

- Fixed speed peristaltic pump with analogue adjustment of dosing time
- Both feature trimmer enabled dosing time.
- Available as a low flow variant
- Flow rate 0.4 – 1.5 l/h

Peristaltic Pumps



Dynamik Series

SEKO's digital multifunction peristaltic range features **microprocessor technology** across all its products, providing precise and reliable programming of speed, time and conductivity values.

Its **luminous, 4-digit display** makes it easy to read and interpret information, aided by the use of green and red colours to differentiate between programming and parameter control.

SEKO's outstanding **Transaxle Technology** provides support and stability to the drive shaft, making the roller pressure on the squeeze tubes more uniform extending both motor and tube life.

Analogue versions are also available.

DR Peristaltic pump

- Designed for all single-tank and tunnel warewash machines with one or two solenoid valves for dosing detergent
- Volumetric or timed dosing modes, where the pump starts dosing at set speeds or when a signal is detected, and stops when the set dosing time has finished
- Flow rate 0.7 – 10 l/h

CR Fixed speed peristaltic pump

- Designed for single-tank or tunnel warewash machines
- Unit's digital programming mode allows users to set the conductivity that best corresponds to the desired detergent concentration
- Pump can also detect a lack of water, reducing risks of a costly malfunction
- Flow rate 7 – 10 l/h

SR Peristaltic pump

- Designed to dose rinse aid on all single-tank or tunnel warewash machines
- Features volumetric or timed dosing modes
- Flow rate 0.1 – 1 l/h



Kronos Series

The Kronos Range has been designed as the most reliable and robust of pumps within the SEKO range for Cleaning and Hygiene applications. In the place of complex functionality, stylish shapes or cost savings, the range has been designed to be an “**plug and play**” version of SEKO products, with an **extended life expectancy**, **low maintenance expectations**, and even **lower installation costs**.

Kronos 10

- For use in light to medium intensity environments
- Featuring a brand new technical enclosure and operating functions
- Easy to use and offering affordability for many applications.
- Both analogue and digital versions
- Flow rate 0.16 – 10 l/h

Kronos 20

- Digital only professional pump suitable for use in harsher environments
- 3 models available - detergent, rinse aid and with conductivity control input
- LCD backlit display
- Motor surge protection
- Built in tube break alarm
- Features the optional ModBus communication port
- Flow rate 0.16 – 10 l/h

Kronos 50

- Delivers the highest precision and consistency of dosing even at smallest concentrations
- 10 models to choose from
- Uses a Stepper motor, to offer infinitely variable dosing and superior reliability
- SEKO's Transaxle Technology greatly extends the life of the motor as well as the squeeze tubes
- Quietest pump operating at <35dB
- Flow rate 0.002 – 25 l/h

Double & Triple systems

- Complete solution for warewash machines in a single enclosure
- Quick and easy installation to saves time and costs
- Smart electronic and multiple programming features
- Low maintenance and robust design



TwinDose Series

The TwinDose series offers compact systems for automatic dosing of detergent and rinse aid. Specifically designed for **fixed-cycle, hood and conveyor professional warewash machines**, it includes SEKO's ever present design features that **ensure easy installation and programming**, and "**quick connection**" solutions between pump and warewash machine.

Transaxle Technology helps improve operating efficiencies, providing support and stability to the drive shaft, making the roller pressure on the squeeze tubes more uniform, resulting in significantly **improved lifetime** for both the motor and squeeze tubes.

TwinDose 20

- Designed for hood and conveyor-type warewash machines
- Suitable for professional single and double solenoid valve warewash machines
- Compact design and LED display, using potentiometers and DIP switches
- Flow rate 0.2 – 6 l/h

TwinDose 10

- Compact system for automatic detergent & rinse aid dosing
- Suitable for professional single solenoid valve warewash machines
- Features LED display, potentiometers & DIP switch settings
- Flow rate 0.2 – 4 l/h

TwinDose 25

- Designed for hood machines, though can also be used for conveyor type machines
- Analogue system that uses advanced technology, offering timed dosage at constant speeds
- Independent electronic circuit boards manage the dosing of products delivered to the wash tank.
- System can be set with DIP switches & buttons
- Flow rate 1 – 6 l/h



TwinDose 35

- Designed for heavy duty applications, where dosing time exceeds 50 hours per week
- Microprocessor controlled dosing system with LED display, uses potentiometers and DIP switches settings
- Solution concentration detected & kept constant via conductivity sensor or by a timer
- Also available in a powder compatible version
- Flow rate 0.9 – 10.8 l/h

TwinDose 40/40 Plus

- Designed for heavy use, industrial warewash machines
- Full digital control, with password protection for programming
- Back-lit display
- Conductivity probe for accurate reading.
- Plus models get an inductive probe
- Flow rate 2.4 – 13.2 l/h

TwinDose 40 EVO/EVO Plus

- Evolution of the TwinDose 40/40 Plus
- Feature separate management capability of the initial charge, with 2 differently set programs, and offer the possibility to dose the desired amount of chemical in calibrated mode.
- Also offer a wide set of statistical data
- Plus models get an inductive probe
- Flow rate 1.5 – 9 l/h

TwinDose 50 EVO/EVO Plus

- Microprocessor controlled dosing system with further upgrades with regards to TwinDose 40 EVO
- It can house up to 3 pumps, one of which may even be electromagnetic
- Manages up to 3 different dosing programs that can be started automatically at certain times of the day
- Plus models get an inductive probe.
- Flow rate 1.5 – 9 l/h

Timed Dosing

- Delivery of a single chemical at predetermined timed intervals
- Up to 48 programmable events per day (Drain Plus)
- Quick and easy installation
- Low maintenance and robust design
- User friendly programming speeds up operations



Drain Dosing

SEKO's **timed dosage** systems are designed for use with biological drain dosing systems and provides **accurate automatic dosing** of enzyme based chemicals that will naturally prevent the build-up of fat, providing they are applied regularly at the appropriate time of day. It can be installed directly into **waste outlet pipe, grease traps, pumping stations or urinals.**

TM Digital

- Provides very easy and accurate timed dosing solutions using a programmable clock to control the pump
- TM digital makes it possible to setup to 17 dosing periods throughout the week
- The programmer can start the pump (in manual mode) or disconnect the pump from the clock signals
- Flow rate 0.4 – 3 l/h
- Also available with power supply by batteries

Drain Plus

- Drain Plus uses state of the art electronics to insure reliability and ease of use
- Microprocessor means the unit can set up to 48 daily dosing operations
- Digital display, counts down dosing time providing visual verification
- Drain Plus features easy installation, setting and programming, with 2 separate menus
- Dosing time can be digitally set or measured by calibration
- Flow rate 120 ml/h – 12 l/h



Laundry

SEKO Solutions for a Smarter Laundry

Running and supplying on-premise or commercial laundries a complex business and accurate, reliable dosing management is one aspect that needs to be dependable. SEKO has a range of liquid and powder, single and multi-machine units to suit most applications including the provision for remote access and data management of a site operation. SEKO's laundry dosing systems, regardless of the range chosen, offer the most reliable, easy-to-use and resilient models on the market today.

OPL machines

- Peristaltic dosing pumps
- Double/Triple Dosing systems

Commercial machines

- Double/Triple Dosing systems
- Multiple dosing systems

Industrial machines

- Double dosing systems
- Multiple dosing systems

Tunnel machines

- Dosing systems

Multi-washer machines

- Centralised peristaltic multiwasher system
- Decentralised pneumatic multi-washer system
- Multi-tunnel system with PLC
- Relay systems for tunnel



Dynamik LR, OPL Basic, Smart Systems

- Wide spread of flow rates for all types of laundry machines
- Quick and easy installation saves time and reduces costs
- Low maintenance and robust design maximizes the investment
- Wide range of tubes to adapt to all chemicals
- Multiple sizes and functions for maximum flexibility



Dynamik LR

- Designed for small OPL washing machines with maximum capacity of 20 kg
- Digital multifunction peristaltic dosing pump that is simple to install, robust and easy of use
- Wide range of options which can connect to a probe level, have an audible alarm and be primed via a switch
- Feature Transaxle technology that extends squeeze tube and motor life
- Flow rate 15 l/h



OPL Basic

- For liquid and dry applications up to 25kg
- Easy to install, calibrate and with a low maintenance requirement
- Dosing activated by washer signal or by manual switch
- Easy access 90 degree cover
- Optional remote switch
- Run time of 0 - 10 minutes
- Flow rate 18 l/h



OPL Basic Evo

- OPL Basic EVO designed where a cost-effective system, with a 2/3 product solution is required.
- Simple to install and use and featuring our Transaxle Technology
- Reduced dimensions make the OPL Basic EVO perfect for installation in narrow spaces
- 2 or 3 pumps are independently programmable, and OPL Basic EVO features the option of being set in "Sequence" mode to ignore the triggers of the previous washing phases
- Programming mode uses the multilingual, alphanumeric display with specifically designed software and preloaded data
- Optionally available with a flushing manifold

Dynamik LR, OPL Basic, Smart Systems



Smart Systems Series

SEKO's Smart range of combines technological development in peristaltic systems, with guaranteed reliability for the chemicals dosed in commercial laundry machines, both **OPL and Industrial**.

The range covers machines from **25kg up to 100kg**. Available in versions from **2 to 7 pumps**, offering a wide flow rate range, with long-life pump motors with fixed or selectable flow rates, and able to **dose up to 3 chemical products simultaneously**, Smart Systems Series offers the most complete and affordable advanced linear programming system, assuring total dosing management.

Smart H

- Designed for industrial sized washers over 25kg up to 300kg
- Manages up to 7 pumps and handling up to 20 wash formulas, each one with unique run times and delay times for each pump
- Flow rate 30 – 120 l/h

Smart RH

- Based on the Series H but with relay mode operation

Smart P

- Designed for commercial sized washers up to 25kg
- Manages up to 7 pumps. Ease of installation and connection are inbuilt
- Series P has a front cover that opens to 85° allowing easier electrical connections
- Flow rate 18 l/h

Smart PH

- Based on the Series P but with relay mode operation



Smart Spring

- Designed to control a motor drive or solenoid metering pumps, instead of peristaltic pumps
- System can operate in a programmable mode (triggered by signals) or in relay mode
- Smart Spring can handle up to 20 wash formulas and can dose 3 chemicals simultaneously
- Ideally suited to tunnel machines with their high turnover
- Power relay for heavy duty loads

Smart Spring R

- Smart Spring R runs with a relay mode

Smart Programmer

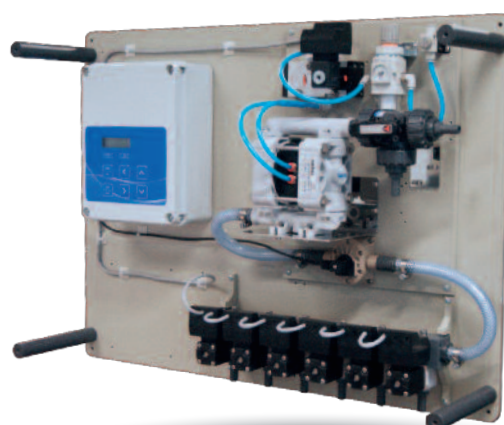
The brain within every professional laundry installation, the programmer is the critical element of the whole system. SEKO has developed a programmer capable of **managing the entire SMART range of laundry pumps in a single model**, which makes end user training simple and easy, reducing the risk of operational errors.

SEKO's Smart Programmer reflects a complete and advanced linear programming system, to assure total dosing management for the Smart models.

- Manages up to 40 wash formulas, in 2 separate categories with 20 formulas each
- Has 25 programming lines for each washing formula
- Doesn't require a connection to the control unit to be able to program the operations
- Chemical usage data available via serial interface
- "SMART WARE" software assures programming and statistic data management by PC
- Autowash function just needs signal combinations from washers to work
- Programming available in: English, Italian, French, German and Spanish
- Program security of password protection

Wash Series

- Turn key multi-washer chemical dosing system, flexible and reliable
- Configurable for up to 10 washer extractors, 16 chemicals and 50 formulations
- Offers superior dosing accuracy & remote management
- Available with multiple or single pump technologies for tailor-made solutions for any application
- Reliable communications between modules via CANbus



Wash Series

SEKO's Wash Series is designed to allow accurate control of the total laundry operation, helping to **manage consumption of chemical, water and energy** within the overall wash process. Over and above the Smart series, SEKO's Wash Series offers a **class leading remote control** of the dosing equipment from anywhere in the world, allowing the ultimate in customer support.

Wash Series works independently of an operating system/hardware. It works in **any web browser** on any internet enabled device, without any special Software or App. This remote communication ability allows **service companies** and personnel to manage and **reduce maintenance costs** and offers service companies diagnostics abilities improving customer service.

WashMaster

- Designed for very accurate dosages on Wash extractor up to 100Kg size
- Peristaltic multi pump dosing unit, featuring high capacity "H" pump heads allowing 100 l/h flow rate
- Features self adjusting calibration

WashUltra

- Fast sequential dosing obtained with a single pneumatic diaphragm pump and several valves for inlets a distribution in a single flushing line
- Comes as standard with the Proof Of Dosing (POD) flowmeter
- Inbuilt self adjusting calibration

WARNING
DO NOT OPEN DOOR WHEN
DRAIN IS TURNING
OR WATER IN THE WINDROW
IS ON.

INTERRUPTION
BEFORE
DOOR.

WASH





Surface Cleaning

SEKO's Solutions for Surface Cleaning and Disinfection

SEKO offers the widest range of chemical dilution and dispensing stations, surface cleaning, foaming systems and automated dosing management solutions, suitable across a multitude of applications. Our low pressure systems are especially effective, providing long contact time ensuring an effective deeper clean. Our ranges offer the trademark SEKO attention to detail for precision, safety, reliability, ease of use and affordability.

Dilution

- Hand pump
- Dilution system

Cleaning and disinfection

- Spraying system

Foaming

- Foaming system

Spraying

- Automotive spraying system

Refill

- Chemical dispensing system

Dilution Control

- Precision dosing systems
- Outstanding solutions
- Ease of installation
- Ease of use
- Reliable and secure



ProMax and ProMax C

- ProMax and its ProMax C variant, offer the most intuitive and cost effective dispensing system available in the market today
- Available in either 1 or 4 product versions
- Revolutionary patented hydrodynamic technology sets new industry standards of performance and reliability
- Modular and flexible for maximum versatility for Kitchens to Laundry, Janitorial services to Commercial Cleaning
- Efficiently fills small, medium and large containers with accurately diluted use solutions from chemical concentrates
- Outstanding space for personalized branding or customized communication without costly printing minimums and set up charges
- ProMax C certified by all the leading European water authorities
- Flow rate 4 – 30 l/min



ProDose-R

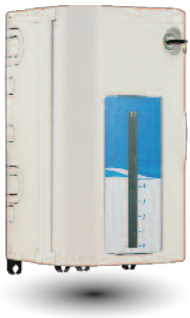
- Offers easy and affordable control and dilution accuracy for manual warewash detergents and sink sanitizers
- ProDose-R features enhancements including a flexible spout, larger diameter fittings for highly viscous liquids and an improved stroke regulation
- Colour coded cap can be easily removed to allow access to the dosage setting mechanism
- ProDose-R offers up to 6 different dosage settings



ProSink-R

- Provides high precision dosing for manual warewash in catering environments
- Automatically and consistently mixes the precise amount of detergent and sanitizer with water with the simple twist of a knob
- Tool free maintenance
- 15 different mixing ratios
- Available in either 1 or 2 product versions
- Flow rate 4 – 16 l/min

Dilution Control



SekureMax

- Modular evolutionary chemical dispensing cabinet
- Semi flat pack design assists transport and storage costs
- Offers secure and precise dilution of cleaning or disinfectant chemicals
- Provides best compromise between accessibility and ease of cleaning
- Large front offers space for customized communication to promote either a brand or health and safety or usage instructions
- Ultimate flexibility, able to hold multiple sizes of chemical container covering 5 litre, 2 x 2 litre, 3 x 1 litre
- Lockable cabinet door provides appropriate level of security



SekureDose

- "ALL IN ONE" system for dosing chemicals in places like hotels, restaurants, schools and offices
- Offers ideal solution for filling spray bottles or buckets to wash floors, counter tops or other hard washable surfaces and for sink filling for pot and pan washing with accurately dosed cleaning solution
- Secure in use, simple tool free installation and flexible, modular design, fast stroke regulation
- No electrical connection or water supply required
- Offers outstanding space for personalized branding or communication customizations without costly printing minimums and set up charges, with user friendly, image enhancing feature
- Colour coded caps for ease of product identification and training

Cleaning and Disinfection

- Ideal for large food preparation areas
- Suitable for retail, institutional and healthcare markets
- Ergonomic design
- HACCP compliant
- Accurate dilution control
- Integrated hose support
- Easy installation
- Intelligent Venturi system



ProTwin

- Automatically mixes and dispenses concentrated chemicals
- Spray gun with adjustable spray pattern delivers high levels of wet foam
- Easy switching between Rinse & Sanitize using central dial selector
- Available as a complete unit or as component parts
- Optional Dry Foam kit available includes a foam system, hose and foam lance
- Works at up to 50° C



ProWash

- "INTELLIGENT" venturi system means simple maintenance
- Helps reduce water & chemical waste
- Features high performance suction
- Working temperature of up to 50° C
- 2 product offers - single or dual product options
- Working pressures 1.5 – 6 bar



ProKlyn

- Minimizes water & chemical waste
- Brass venturi external body provides greater resistance and robustness, while its inner venturi is made of PP for high chemical compatibility
- Venturi is also extractable and interchangeable, making for easy, quick maintenance
- Working temperature of up to 50° C
- 2 product offers - single or dual product options
- Working pressures 1.5 – 6 bar

Cleaning and Disinfection



JetNeat

- Portable low pressure cleaning system, requires no power or air supply, at up to 45°C
- Combines a quick connect spray gun with chemical or disinfectant reservoirs made of durable, chemical resistant plastics
- Large range of metering tips for controlling dilution ratios
- 1.4 and 2.5 litre versions available



ProFaucet

- Easy to operate dosing solution for catering sinks
- Requires no additional plumbing
- Features durable chemical compatible materials
- Flow rate of 20 l/min

Foaming Systems

- Designed to offer outstanding performance in the cleaning and disinfection of vertical or difficult access surfaces
- Easy Maintenance
- Venturi system with no moving pieces
- Requires no additional power supply
- Food grade materials
- Incorporated hose rack
- 15 colour coded dilution tips



ProFoam

- Chemical foam generator that offers automatic mixing of chemical with water generating a thick creamy foam
- Foam density reduces water & chemical waste
- Designed to meet HACCP requirements
- Works at 50° C working and water pressures of 2 – 6 bar



ProFoam-R

- ProFoam-R in addition to ProFoam, features a rinse functionality
- Produces high quality dry foam
- Foam density reduces water & chemical waste
- Designed to meet HACCP requirements
- Works at 50° C working and water pressures of 2 – 6 bar



ProMulticlean

- Foam, rinse and spray for 2 chemicals
- Backflow device optionally available
- Foam density reduces water & chemical waste
- Designed to meet HACCP requirements
- Works at 50° C working and water pressures of 2 – 6 bar



Foam Cannon

- Pressurized mobile system producing rich and thick foam
- Chemical premixed with water creating cleaning or disinfection solution
- System needs constant connection to compressed air to operate
- Equipped with a lance and dosing tube
- Comes in 24 or 50 litre models
- Available in stainless steel and painted versions

Spray Systems

- Designed for the professional automotive care sector,
- Can also be used in other industrial cleaning processes
- Easy to use
- Ergonomic design
- System can be assembled with cart
- Venturi system with no moving parts
- Integrated hose rack



ProPulv

- Single product system for spraying pre-wash shampoos or detergents on cars, trucks and other such vehicles
- Designed to HACCP basic requirements for possible food applications
- Stainless steel lance
- Working temperature up to 50°C
- Working pressure 2 – 6 bar



ProNet

- Single product system for spraying rinse aid solutions on cars, trucks and other vehicles
- Reduces water & chemical waste
- PVC lance
- Working temperature up to 50°C
- Working pressure 2 – 6 bar



ProDual

- Dual product system for spraying pre-wash shampoos, detergents and rinse-aid solution on cars, trucks, and other vehicles
- Reduces water and chemical waste
- Stainless steel and PVC lances
- Working temperature up to 50°C
- Working pressure 2 – 6 bar



ProAcid

- Specifically designed to spray aggressive detergents or acid chemicals in sectors including: transport, industry, institutional & agriculture
- Engineered for better resistance to highly concentrated aggressive chemicals
- PVDF Venturi
- PVC lance
- Working temperature up to 50°C
- Working pressure 2- 6 bar



Spray Cannon

- Pressurized mobile spraying system
- Chemical premixed with water creating cleaning or disinfection solution
- System needs constant connection to compressed air to operate
- Equipped with a lance and dosing tube
- Comes in 24 or 50 litre models
- Available in stainless steel and painted versions

Refill Range

- Designed with the busy cleaning operator in mind
- Focused on simplicity
- Reduction of operational costs
- Ready to install solutions
- Quick connection system



ProFill

- Automatic & consistent mixing of chemical cleaning solution
- For floor scrubber machines or tanks up to 120 litres
- Comes with 14 sizes of calibration tips
- Uses a specially conceived blue venturi design, that means there is no need to disassemble the whole machine
- Flow rate 14 l/min
- Working temperature up to 50°C
- Working pressure 2 - 6 bar



ProFill Premium

- As per ProFill
- 14 litres per minute flow-rate
- Low maintenance design and ergonomic delivery gun designed for tanks up to 120 litres
- Also offers a rinse function
- Working temperature up to 50°C
- Working pressure 2 – 6 bar



ProFill Tower

- High flow rate single chemical dispensing system
- Refill the scrubber drier machines or tanks and has a 300 litre capacity
- Offering 15 different dilution rates
- Connected directly to the water supply
- Automatically refilled with water
- Flow rate 200 l/min
- Reduced maintenance thanks to blue venturi system
- Automatic switch off by float or magnetic valve
- EPDM check valve with Hastelloy spring



Your Choice, Our Commitment

People choose to do business with SEKO for one or more reasons, but ultimately it is their choice, and therefore they merit our commitment. "Our commitment" is total and not only to our customers, but also to each other and the Company's to its employees.

Vision

**TO BE YOUR PARTNER OF CHOICE FOR
DOSING SOLUTIONS, GLOBALLY**

SEKO, is a passionate, dedicated Global Family of Professionals. We listen to each of our Partners and are committed to deliver the right solution in the Hygiene, Water Treatment and Industrial Process markets.

Values

**MUTUAL RESPECT, QUALITY AND
SPIRIT OF COLLABORATION**

MUTUAL RESPECT

Mutual Respect because doing business is about being able to generate trust between Customer and Supplier. We'll deliver against our commitments, on time and in a transparent fashion, so you know can plan for your own business needs.

QUALITY

Quality for SEKO is a 360° reality. It covers not only the design, development, production and delivery of our products and solutions but it runs through the core professionalism of our teams.

SPIRIT OF COLLABORATION

Spirit of Collaboration is fundamental to our success and SEKO prides itself on how we work as a worldwide team, blending multiple country teams and functions to bring solutions to a Customer request or market need from an idea to the real world in very short time, across our global presence and beyond.



Your Choice, Our Commitment

In the modern Globalised world, being a privately owned Company has significant benefits especially for our Customers, our Partners. For over 40 years, SEKO has developed a Global organisation able to take the longer view, manage the pressure of the now, and to plan for the long term, delivering true Partnership for our Customers, with transparency and mutual respect for each other.

Whether it's for our reknown flexibility, our attention to detail, the high-quality products, or just the way we do business, we understand that it's Your Choice to do business with us. It is Our Commitment to fulfill your needs wherever you, our Customers are.



For more information about our portfolio, worldwide locations, approvals, certifications, and local representatives, please visit www.seko.com

As part of a process of on-going product development, SEKO reserves the right to amend and change specifications without prior notice. Published data may be subject to change.

© SEKO, Layout and origin: Italy, 850003-CHD_en, 04.2017

The SEKO logo, consisting of the word "seko" in a bold, blue, lowercase sans-serif font. The letter 's' is particularly thick and stylized. The logo is positioned at the bottom right of the page, above a large blue abstract image of water droplets and light rays.

seko

Solutions for **Pools & Spa**



Your Choice,
Our Commitment

Content

Introduction page 04

Equipment for Residential Pools & Spa page 06

- Control and dosing systems
- Pre-assembled panel-mounted

Equipment for Professional Pools page 18

- Photometer Systems and PoolPhotometer
- Kontrol Panel and Kontrol Guard Tech
- Kontrol Tekna Panel with controllers

Equipment for Pools & Wellness page 28

- Dosing pumps
- Controllers and portable controllers
- Blower Side Channel compressors
- Pool Cleaning Station

Accessories page 34

- Probes
- Modular Probes Holder
- By-Pass probe holders and clamp saddles
- Cables
- Buffer solution pH/ORP
- Housing and filter cartridges 5"
- Water meter pulse sender
- Tank, Uncovered tank, Reinforced and Mixers

Additional Information page 42





A Worldwide Group at your service

Globally Present, Locally Active

Our Global presence ensures that we can support our Customers wherever they are. Supported by teams in over 20 countries, as well as by our accredited Partner Distributor network, we ensure professional, local customer support in over 120 countries, with the added benefit of rapid delivery of goods to meet your needs.

All this backed up and supported by a world-class team of Technical Customer Service, able to provide all the back up or technical support needed. With ISO certificated production sites in Europe, the Americas and Asia, we are close to our customers and fully compliant with all local norms both in terms of our product designs as much as our production facilities.

How SEKO works for You

From the spark of an idea, through to the delivery of a solution, SEKO is with you all the way

SEKO supports its customers in every phase of a project, from the inception of an idea or request, through design and testing to launch and installation. Our in-house research, design and development teams work closely with the local teams, drawing on customer and market inputs. Then using state-of-the-art technologies to optimize costs and using our own specifically designed test benches to ensure rigorous, robust testing, we ensure a quality solution is delivered quickly to market.

No matter which processes and applications are planned SEKO has a solution in the cleaning and hygiene of kitchens and laundries and surfaces of all types in applications like **Offices and Restaurants, Hospitals and Hotels, Retailers and Schools, Car Washes and Swimming Pools, Cooling Towers, Energy, Food & Beverage, Water & Gas Utilities Potable and Waste Water Treatment.**

1 Partnership Philosophy

Being a privately-owned business means that we are here for the long term and can plan projects with and for our Customers, where both parties benefit. It means we can rapidly take decisions to invest our resources to ensure our optimum solutions are delivered.

2 Your Business, Our Solutions

Our extensive product range represents a unique combination of design, development and implementation know how. With a wide and ever evolving range of products and ancillaries, we can offer specific and comprehensive solutions for a variety of industrial applications. Our solutions are conceived to fit seamlessly into your operation, optimizing the processes and applications

3 Uniquely Positioned

SEKO's 3 business units, Cleaning & Hygiene, Water & Industry and Industrial Processes puts us in a unique position to be able to respond to the widest range of business needs, with a broad range that allows you the Customer to deal with just one company, simple.

Pools & Spa

An ever-evolving set of solutions for pristine pools

SEKO has been at the forefront of developing solutions for both residential and professional swimming pools for many years and has always delivered the most efficient, practical and complete solutions for the reseller or for the installer.

SEKO's design and manufacturing processes ensure all our solutions and systems deliver:

Precision and Consistency

Ensuring that water quality is always at its best, balancing the variables that impact it, demands measuring and dosing systems with the highest accuracy and built with precision in mind, that can function in both indoor and outdoor environments. Parameters measured include: pH, ORP, Conductivity, Chlorine, Oxygen, Turbidity, Peracetic Acid, Ozone, Bromine, Peroxide and Flow rate.

Safety and Reliability

The safety of customers, installers and operators is paramount, requiring the very best in terms of design and features. From the IP65 class enclosures of our dosing systems and controllers through to the precise choice of materials used to ensure full chemical compatibility over time, safety is at the forefront of our design ethos. Reliability drives good safety, and all SEKO's products are fully tested prior to leaving our warehouse.

Ease of Use and Installation

As a Global company, SEKO is attuned to the differing needs of individual markets. When we design a new product, we ensure that installation is simple, we use uniform programming language solutions, that are intuitive and easy to understand and which on our Controllers is also available in multiple languages. From our plug and play residential systems, through to our complex professional systems for Water parks, these characteristics are always present.

Operational Efficiency

From the domestic pool to the largest water parks, the costs of running a pool require close management, and for the larger public pools and water parks the question of water quality, and clarity of appearance become more critical from a brand safety and image point of view. Our SEKONet system offers significant benefits for larger water parks being able to monitor and control up to 99 controllers, giving peace of mind and outstanding operational benefits. From the simple plug and play residential product range, through to our Professional ranges and our Custom build options, SEKO has the range of pumps and controllers that will keep a pool crystal clean.



equipment for

Residential Pools & Spa

page 08

Control and dosing systems

Single pump systems

PoolKronos – Basic – PoolBasic – Kontrol Invikta

pH

ORP

Timed dosing

Proportional dosing

Double pump systems

PoolKronos – Basic – PoolBasic – Kontrol Invikta

pH

ORP

Timed dosing

Proportional dosing

Triple pump systems

PoolBasic Pro - Kommander

pH ; ORP ; Flocculant

pH minus ; ORP ; pH plus

pH ; ORP ; Chlorine ; Flocculant

pH ; ORP ; Circulation pump and boiler automation

page 16

Pre-assembled panel-mounted

pH ; ORP controller

pH ; ORP double peristaltic pumps

pH ; ORP double solenoid driven pumps

Control and dosing systems

Peristaltic or solenoid driven dosing systems with built in controllers for single, double or multi parameter measurement

Combined systems with peristaltic pumps, solenoid driven dosing pumps and controller. to automatically measure and verify the values of the pool water. The units for residential applications have been designed so they do not require the presence of technical personnel.

- Peristaltic dosing pumps with 2 or 3 PVDF rollers and Santoprene or SekoExtra tubing
- Easy and advanced parameter setting
- Proportional dosing TWM (Time With Modulation) or FWM (Frequency With Modulation)
- Calibration process uses high quality pH and ORP probes
- Extra dosing available thanks to pH and chlorine relay
- Amperometric sensor measures chlorine PPM
- Circulation and boiler controller
- Installation kit included
- No technical skill required
- Remote alarm relay
- Circulation pump checks "Power On" flow trigger
- Input level probe checks product levels
- Multi language menu

SINGLE PUMP FOR PH OR ORP MEASUREMENT

SEKO's principal offering for the residential pool market provides a user-friendly combination of products consisting of controllers and integrated proportional dosing pumps, the end user can adjust pH and chlorine values as required.



PoolKronos single peristaltic dosing systems with a stepper motor pump and 3 PVDF rollers using built in controllers for pH/ORP measurement.



Basic combined system with a peristaltic pump and either automatic proportional or timed dosing to adjust key chemical parameters.



PoolBasic user-friendly analogue or digital combined system with a peristaltic pump and single measurement with automatic proportional dosing.



Kontrol Invikta user-friendly solution combining a solenoid driven pump and single measurement with automatic proportional dosing.

TWO DOSING PUMPS FOR MULTI-PARAMETER MEASUREMENT

SEKO has developed new advanced combined systems for the hotel and spa markets, featuring amperometric chlorine measurements which ensure full compliance with most local legislation.



Kontrol Invikta Double combines two solenoid driven pumps with a multi measurement capability and an automatic proportional dosing.

TWO OR THREE DOSING PUMPS FOR MULTI-PARAMETER MEASUREMENT

SEKO's double or triple pump systems featuring amperometric chlorine measurements and an innovative system to control circulation pumps and boilers for hotel swimming pools and spas that fully complies with legislation.



PoolBasic Pro combines two or three peristaltic pumps and a multi measurement capability with automatic proportional dosing.



Kommander advanced combined system with two or three peristaltic pumps with either automatic proportional or timed dosing that adjusts chemical parameters and which comes with built-in functions that enable weekly timed management of the circulation pump and a temperature sensor for boiler activation using a relay.

INSTALLATION KIT INCLUDED

pH and ORP probes, amperometric chlorine cell
 By-pass and pressurized probe holder
 pH and ORP buffer solutions
 Piping DN50

Brass brush
 5" with 80 µm cartridge
 Ceramic foot filter and FPM non return valve
 4x6 and 8x12 PVC and PE tubes



PoolKronos 10

PoolKronos 10 is a peristaltic dosing system using **built in controllers for pH/ORP** measurement designed specifically for Swimming Pool applications and offers flexibility of installation, user-friendliness in programming and a constant chemical dosing by pH or ORP analysis.



POOLKRONOS 10

- for pH (3.8 – 8.2)
- for ORP (400 – 999 mV)

CONSTANT DOSING PUMP

Flow rate 1.5 l/h ; Pressure 1.5 bar

POOL SIZE Indoor 1 – 130 m³ ; Outdoor 1 – 110 m³

MAIN BOARD

Display LCD 7 segment

Power supply with galvanised electrical insulation
100 – 240 Vac 50/60Hz

IP65 ENCLOSURE

Dimensions 204 x 76 x 124 mm

Material PP with fiber glass

PoolKronos 20

PoolKronos 20 builds on the PoolKronos 10 peristaltic system. Designed specifically for Swimming Pool applications, it also uses **built in controllers for pH/ORP analysis** and offers installation flexibility, user-friendly programming and proportional chemical dosing using pH or ORP analysis. The PoolKronos 20 has an **improved LCD display** for ease of reading measurements.



POOLKRONOS 20

- for pH (4 – 10)
- for ORP (300 – 999 mV)

PROPORTIONAL DOSING PUMP

Flow rate 1.5 l/h ; Pressure 1.5 bar

POOL SIZE Indoor 1 – 130 m³ ; Outdoor 1 – 110 m³

MAIN BOARD

Display LCD 8 letters x 2 lines

Power supply with galvanised electrical insulation
220 Vac 50 Hz cord cable

IP65 ENCLOSURE

Dimensions 204 x 76 x 124 mm

Material PP with fiber glass

PoolKronos 50

PoolKronos 50 has the broadest range of measurement of the PoolKronos range coming with a **bigger 16 letter LCD display**. As with the rest of the PoolKronos products, it uses **built in controllers for pH/ORP analysis**. Similarly it is extremely flexible in terms of installation, user-friendly for programming and offers proportional chemical dosing by pH or ORP analysis.



POOLKRONOS 50

- for pH (0 – 14)
- for ORP (0 – 2000 mV)

PROPORTIONAL DOSING PUMP with Stepper Motor pump ; Flow rate 2 l/h ; Pressure 3 bar

POOL SIZE Indoor 1 – 140 m³; Outdoor 1 – 120 m³

MAIN BOARD

Display LCD 16 letters x 2 lines

Power supply with galvanised electrical insulation
100 – 240 Vac 50/60Hz

IP65 ENCLOSURE

Dimensions 207 x 117 x 145 mm

Material ABS

Basic Series

The Basic Series, despite its name, offers an advanced combined system with a **peristaltic dosing pump and either automatic proportional or timed dosing** to adjust key chemical parameters in domestic, above ground pools and spa.



BASIC

- PRO Input 4÷20mA or frequency pulse
- TIME by weekly timer built in

DOSING PUMP

Flow rate 25 – 9750 ml/h ; Pressure 1.5 bar

POOL SIZE Indoor 5 – 130 m³; Outdoor 5 – 110 m³

MAIN BOARD

Alphanumeric display 16 letters x 2 lines

Power supply 100 – 240 Vac 50/60Hz

IP65 ENCLOSURE

Dimensions 234 x 162 x 108 mm

Material PP

PoolBasic LED

PoolBasic LED is a user-friendly **analogue combined system with a peristaltic dosing pump and single measurement with automatic proportional dosing** that enables chemical adjustment for above ground pools.

POOLBASIC LED

- for pH (6.2 – 8.2)
- for ORP (480 – 750 mV / 660 – 930 mV)

PROPORTIONAL DOSING PUMP

Flow rate 1.5 or 5 l/h ; Pressure 1.5 bar

POOL SIZE Indoor 5 – 130 m³ ; Outdoor 5 – 110 m³

MAIN BOARD

Display LED

Power supply 220 – 240 Vac 50/60Hz

IP65 ENCLOSURE

Dimensions 234 x 162 x 108 mm

Material PP



PoolBasic Plus

PoolBasic Plus delivers a user-friendly solution combining a **peristaltic dosing pump and single measurement with automatic proportional dosing** that adjusts the chemical parameters for above ground pools.

POOLBASIC PLUS

- for pH (0 – 14)
- for ORP (0 – 1000 mV)
- for ORP with shuko (0 – 1000 mV)

PROPORTIONAL DOSING PUMP

Flow rate 1.5 or 5 l/h ; Pressure 1.5 bar

POOL SIZE Indoor 1 – 130 m³ ; Outdoor 1 – 110 m³

MAIN BOARD

Alphanumeric display 16 letters x 2 lines

Power supply 220 Vac 50/60Hz

IP65 ENCLOSURE

Dimensions 234 x 162 x 108 mm

Material PP



Kontrol Invikta

Like PoolBasic Plus, Kontrol Invika delivers a user friendly solution combining a **solenoid driven dosing pump and single measurement** with **automatic proportional dosing** but for larger volume above ground, indoor and outdoor pools.

KONTROL INVIKTA

- for pH (0 – 14)
- for ORP (0 – 1000 mV)

SOLENOID DRIVEN DOSING PUMP

Proportional dosing FWM

(Frequency With Modulation)

Flow rate 5 l/h ; Pressure 5 bar

Wetted parts Body in PVC, membrane in PTFE

POOL SIZE Indoor 50 – 350 m³; Outdoor 50 – 300 m³



MAIN BOARD

Alphanumeric display 16 letters x 2 lines

Power supply 100 – 240 Vac 50/60Hz

IP65 ENCLOSURE

Dimensions 234 x 162 x 108 mm

Material PP

Kontrol Invikta Double

Designed for larger pools, Kontrol Invikta combines **two solenoid driven dosing pumps** with a **multi measurement capability** and an **automatic proportional dosing system** to deliver balanced chemical parameters for above ground and indoor and outdoor pools.

KONTROL INVIKTA DOUBLE

- for pH (0 – 14) and ORP (0 – 1000 mV)
- for pH (0 – 14) and ORP (0 – 1000 mV) and **Free chlorine** (0 – 5 ppm with amperometric probe)

SOLENOID DRIVEN DOSING PUMPS

Proportional dosing FWM

(Frequency With Modulation)

Flow rate 5 l/h ; Pressure 5 bar

Wetted parts Body in PVC, membrane in PTFE

POOL SIZE Indoor 50 – 350 m³; Outdoor 50 – 300 m³



MAIN BOARD

Alphanumeric display 16 letters x 2 lines

Power supply 100 – 240 Vac 50/60Hz

IP65 ENCLOSURE

Dimensions 234 x 162 x 108 mm

Material PP

PoolBasic Pro

Offering the fullest range of possible measurements, the PoolBasic Pro range still offers a user-friendly solution. It **combines two peristaltic dosing pumps** and a **multi measurement capability** with **automatic proportional dosing** designed for above ground, indoor and outdoor pools. PoolBasic Pro is also available with a **3 pump configuration**.



POOLBASIC PRO 2 PUMP VERSION

- for pH (0 – 14) and ORP (0 – 1000 mV)
- for pH (0 – 14) and ORP with shuko (0 – 1000 mV)
- for pH Plus (0 – 14) and pH Minus (0 – 14)
- for pH (0 – 14) and Flocculant dosage
- for pH (0 – 14) and Hydrogen peroxide^(*)
- for pH (0 – 14) and ORP (0 – 1000 mV) and Conductivity (0 – 20000 µS)
- for pH (0 – 14) and ORP (0 – 1000 mV) and Free chlorine (0 – 5 ppm)^(**)

POOLBASIC PRO 2 PUMP MODBUS PROTOCOL COMMUNICATION VERSION

- for pH (0 – 14) and ORP (0 – 1000 mV) and Free chlorine (0 – 5 ppm)^(**)

POOLBASIC PRO 2 PUMP B-WEEKLY TIMER VERSION

- for pH (0 – 14) and Hydrogen peroxide^(*)

POOLBASIC PRO 2 PUMP SPA VERSION

- for pH (0 – 14) and ORP (0 – 1000 mV)
- for pH (0 – 14) and ORP (0 – 1000 mV) and Free chlorine (0 – 5 ppm)^(**)

POOLBASIC PRO 3 PUMP VERSION

- for pH (0 – 14) and ORP (0 – 1000 mV) and Flocculant dosage
- for pH Plus (0 – 14) and ORP (0 – 1000 mV) and pH Minus (0 – 14)
- for pH (0 – 14) and ORP (0 – 1000 mV) and Free chlorine (0 – 5 ppm)^(**) and Flocculant dosage

PROPORTIONAL DOSING PUMPS

Flow rate 0.4 or 1.5 or 5 l/h ; Pressure 1.5 bar

POOL SIZE Indoor 1 – 130 m³; Outdoor 1 – 110 m³

MAIN BOARD

Alphanumeric display 16 letters x 2 lines

Power supply 220 Vac 50/60Hz

IP65 ENCLOSURE

Dimensions 234 x 162 x 108 mm

Material PP

(*) By time and temperature compensation

(**) With Free Chlorine Amperometric probe

Kommander

Kommander is an advanced combined system available with **two or three peristaltic pumps** with **either automatic proportional or timed dosing** that adjusts chemical parameters for both outdoor pools and spa centers. Furthermore, the Kommander comes with additional functions built in. The first is a **weekly timer to regulate the circulation pump** and the second is a **temperature sensor that activates the boiler using a relay switch**.



KOMMANDER 2 PUMP VERSION

- for pH (0 – 14) and ORP (0 – 1000 mV)

KOMMANDER 3 PUMP VERSION

- for pH (0 – 14), ORP (0 – 1000 mV) and Flocculant dosage

PROPORTIONAL DOSING PUMPS

Flow rate 1.5 or 5 l/h ; Pressure 1.5 bar

POOL SIZE Indoor 1 – 130 m³; Outdoor 1 – 110 m³

CIRCULATION PUMP AND BOILER ACTIVATION BY POWERED RELAY max 1.5 kW load

MAIN BOARD

Alphanumeric display 16 letters x 2 lines

Power supply 220 Vac 50/60Hz

IP65 ENCLOSURE

Dimensions 234 x 162 x 108 mm

Material PP

Pre-assembled panel-mounted

The pre-assembled panels of SEKO's range offer advanced solutions for residential swimming pools. A flexible system for quick installation, that combines a pre-selected number of products assembled on a small panel, including a by-pass probe holder, electrical box and controller unit.

- Advanced parameter setting
- Proportional dosing TWM (Time With Modulation) or FWM (Frequency With Modulation)
- Calibration process uses high quality pH and ORP probes
- Extra dosing available thanks to pH and chlorine relay
- Installation kit included
- Amperometric sensor measures chlorine PPM
- No technical skill required
- Remote alarm relay
- Circulation pump checks power on "Flow Trigger"
- Input level probe checks product levels
- Multi language menu
- Circulation and boiler controller

INSTALLATION KIT INCLUDED

pH and ORP probes
 pH and ORP buffer solutions
 Ceramic foot filter and FPM non return valve
 4x6 and 8x12 PVC and PE tubes



Easy Panel

A simple pre-assembled panel with an automatic proportional dosing system for simple chemical parameter regulation for indoor and outdoor pools.

EASY PANEL

- for pH (0 – 14) and ORP (0 – 1000 mV)
- for pH (0 – 14) and ORP (0 – 1000 mV) and Free chlorine (0 – 5 ppm with amperometric probe)

HYDRAULIC PROBE HOLDER

2 PSS7 (single probe)
 2 Washable cartridge filters (80 µm)

MAIN BOARD

Power supply 100 – 240 Vac 50/60Hz
 Cable Box with power supply 230Vac to connect external dosing pump
 Relay 250 V 10 A (Resistive Load) each measure



IP65 PRE-ASSEMBLED PANEL-MOUNTED

Dimensions 630 x 420 x 10 mm

Material PP

Easy Basic

An entry level pre-assembled panel with an automatic proportional dosing system for simple chemical parameter regulation for above ground pools.

EASY BASIC

- for pH (0 – 14)
- for ORP (0 – 1000 mV)

HYDRAULIC PROBE HOLDER

2 PSS7 (single probe)
2 Washable cartridge filters (80 µm)

PROPORTIONAL DOSING PUMPS

Flow rate 1.5 or 5 l/h; Pressure 1.5 bar
Santoprene tubing

POOL SIZE Indoor 1 – 130 m³; Outdoor 1 – 110 m³



MAIN BOARD

Alphanumeric display 16 letters x 2 lines
Power supply 220 Vac 50/60Hz

IP65 PRE-ASSEMBLED PANEL-MOUNTED

Dimensions 630 x 420 x 10 mm
Material PP

Easy Invikta

A simple pre-assembled panel with an automatic proportional dosing system for simple chemical parameter regulation for indoor and outdoor pools.

EASY INVIKTA

- for pH (0 – 14)
- for ORP (0 – 1000 mV)

HYDRAULIC PROBE HOLDER

2 PSS7 (single probe)
2 Washable cartridge filters (80 µm)

SOLENOID DRIVEN DOSING PUMPS

Proportional dosing FWM
(Frequency With Modulation)
Flow rate 5 l/h ; Pressure 5 bar
Wetted parts Body in PVC, membrane in PTFE

POOL SIZE Indoor 50 – 350 m³; Outdoor 50 – 300 m³



MAIN BOARD

Alphanumeric display 16 letters x 2 lines
Power supply 100 – 240 Vac 50/60Hz

IP65 PRE-ASSEMBLED PANEL-MOUNTED

Dimensions 630 x 420 x 10 mm
Material PP



equipment for

Professional Pools

page 20

Photometer Systems and PoolPhotometer

DPD Free Chlorine ; pH ; ORP ; Temperature

DPD Free/Total chlorine ; pH ; ORP ; Temperature

DPD Free/Total and Combine chlorine ; pH ; ORP ; Temperature

page 22

Kontrol Panel and Kontrol Guard Tech

pH ; ORP ; Temperature

pH ; Free chlorine (Amperometric / Potentiostatic cell) ;
Temperature

pH ; Free Chlorine (Amperometric / Potentiostatic Cell) ; ORP ;
Temperature

pH ; Free/Total and Combine chlorine (Amperometric /
Potentiostatic Cell) ; ORP ; Temperature

page 26

Kontrol Tekna panels with controllers

pH ; ORP ; Temperature

pH ; Free/Total chlorine ; Temperature

pH ; Peracetic acid ; Temperature

pH ; Hydrogen peroxide ; Temperature

Photometer

The main solution for professional swimming pools, Photometer is a complete controller that checks free, total and combined chlorine in the water. Thanks to its use of the DPD analysis method, it ensures a perfect results every time.

- Professional parameter setting
- Proportional dosing
- Calibration process uses high quality pH and ORP probes
- Extra dosing available thanks to pH and chlorine relay
- Installation kit included
- DPD analysis method measures Chlorine PPM
- Technical skill required
- Remote alarm relay
- Input level probe checks product levels
- Graphic display controller provides graphical historical reports for each measure thanks to the built-in data logger
- Multilingual controller interface makes for simple operation

MEASURING RANGE

pH 0 – 14

ORP \pm 1500 mV

Chlorine 0 – 5 ppm^(*)

Combined chlorine 0 – 1/ 5/ 10/ 20/ 200 ppm^(**)

(*) DPD Method Light wavelength 520 nm

(**) Using software

Temperature : 0 – 100°C with PT100/PT1000 sensors

INSTALLATION KIT INCLUDED

pH and ORP Probes

pH and ORP Buffer solutions

DPD Buffer Solution



HYDRAULIC PROBE HOLDERS

Features a new hydraulic device that comes with a water drain dedicated to chemical reagents that are used during chlorine measuring. This allows a reduction in the amount of water used for chlorine measurement.

The water that is used for the pH and ORP probes can be returned to the compensation basin, while only the water containing chemical DPD reagent will be discharged into special tanks ensuring compliance with local laws. Fast installation comes thanks to quick couplings for water Inlet and outlet fixings.

The optical unit assures a very high accuracy level of chlorine measurement **with a 520 nm sensor and LED light device**. All Photometer use DPD powder for dilution prior to use that offers a reliable solution at each application.



Probe holder plexiglass body and photometer chamber

IN/OUT tubes 8x12 mm

Back pressure

Temperature 60 °C

Photometer Systems

The SEKO Photometer Systems combine "6 parameter" multi-parameter controllers with a sampler dedicated to chlorine measurement.

PHOTOMETER SYSTEMS

- for Chlorine and pH
- for Chlorine and pH and ORP
- for Chlorine and Combined chlorine and pH and ORP

DPD PUMP

Peristaltic pump with 2 mechanical support

Silicon tube 3x5 mm

Flow rate 0.15 cc sample measure

Back pressure

DPD Chemical 1 liter 24 days at 5 minute period sample

MAIN BOARD

Graphic display 240x128 pixel with back light

Power supply 100 – 240 Vac 50/60Hz



IP65 ENCLOSURE BOX

Dimensions 276 x 514 x 127 mm

Material ABS

Pool Photometer

The SEKO Pool Photometer features a "4 parameter" multi-parameter controllers combined with a sampler dedicated to chlorine measurement.

POOL PHOTOMETER

- for Chlorine and pH and ORP
- with Data logger included
- with Probe holder for Hydraulic closed loop

DPD PUMP

Peristaltic pump with 2 mechanical support

Silicon tube 3x5 mm

Flow rate 0.07 cc sample measure

Back pressure

DPD Chemical 1 liter 24 days at 5 minute period sample

MAIN BOARD

Graphic display 240x128 pixel with back light

Power supply 100 – 240 Vac 50/60Hz



IP65 ENCLOSURE BOX

Dimensions 630 x 420 x 10 mm

Material PP

Kontrol Panels

Ultimate flexibility offered for the professional pool market comes from the Kontrol 800 panel range, which assures a complete and superior system to control large complex pool systems.

- Professional parameter setting
- Proportional dosing
- Calibration process uses high quality pH and ORP probes
- Extra dosing available thanks to pH and chlorine relay
- Installation kit included
- Technical skill required
- Amperometric measurement of chlorine PPM value
- Remote alarm relay
- Input level probe checks product levels
- Multi language menu
- Tekna Panel skid for quick installation

MEASURING RANGE

pH 0 – 14
 ORP ± 2000 mV
 Chlorine 0 – 5 ppm
 Chlorine dioxide, Free amperometric chlorine,
 Total potentiostatic chlorine, Combined chlorine^(*)
 0 – 1/ 5/ 10/ 20/ 200 ppm

(*) Using software

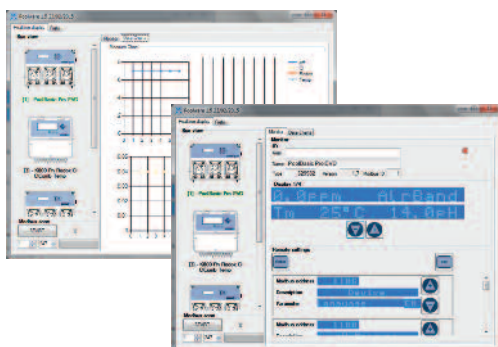
HYDRAULIC PROBE HOLDERS

Transparent modular probe holder PSS-Plexi
 IN/OUT tubes 8x12 mm
 Pressure 5 bar
 Temperature 60 °C

INSTALLATION KIT INCLUDED

pH and ORP probes, amperometric chlorine cell
 By-pass probe holder
 pH and ORP buffer solutions

Brass brush
 5" with 80 µm cartridge
 Ceramic foot filter and FPM non return valve



PoolWare Kit for Kontrol 800 Panel

PoolWare software can control up to 99 Kontrol 800 panels simultaneously thanks to a data network.

It is possible to connect every unit to a PC which means a single software programme can set and manage all the system parameters.

Kontrol 800 Panel

A pre-assembled, panel-mounted system that manages and adjusts the pH and chlorine levels with automatic proportional dosing for public pools.

WITH AMPEROMETRIC PROBES

- for pH and ORP
- for Chlorine
- for Chlorine and pH
- for Chlorine and pH and ORP

WITH POTENZIOSTATIC PROBES

- for Chlorine and Chlorine dioxide
- for Chlorine and Chlorine dioxide and pH
- for Chlorine and Chlorine dioxide and pH and ORP

HYBRID MODEL

- Free amperometric chlorine and total potentiostatic chlorine and combined chlorine (using software) and pH and ORP



MAIN BOARD

Alphanumeric display 20 letters x 4 lines
Power supply 100 – 240 Vac 50/60Hz

IP65 PRE-ASSEMBLED PANEL-MOUNTED

Dimensions 276 x 514 x 127 mm
Material PP

Tekna Panel Skid for Kontrol 800 Panel

A pre-assembled, panel-mounted skid featuring solenoid driven dosing pumps and controllers that comes in both a digital and analogue version.

TEKNA PANEL

- ANALOGUE 2 Tekna AKL
- DIGITAL 2 Tekna TPG

SOLENOID DRIVEN DOSING PUMPS

Tekna AKL 603 or 803 analogue solenoid driven dosing pump with constant manually adjustable flow rate.

Tekna TPG 803 digital solenoid driven dosing pump with manually adjustable constant flow rate, or with proportional flow rate that is based on readings from an external analogue (4 – 20 mA) or digital signal (water meter)

(603) Flow rate 4 – 8 l/h ; Pressure 2 – 12 bar

(803) Flow rate 20 – 110 l/h ; Pressure 0,1 – 5 bar

Wetted parts Body in PVDF ; Membrane in PTFE



POOL SIZE

(603) Indoor 150 – 600 m³; Outdoor 100 – 500 m³

(803) Indoor 300 – 1500 m³; Outdoor 200 – 1200 m³

MAIN BOARD

Alphanumeric display 16 letters x 2 lines
Power supply 100 – 240 Vac 50/60Hz

IP65 PRE-ASSEMBLED PANEL-MOUNTED

Dimensions 600 x 300 x 10 mm
Material PVC

Kontrol Guard Tech

The Kontrol Guard Tech is the most advanced model in the SEKO range of controllers. The new Kontrol Guard Tech unit, with its 5" digital graphic display, combines the traditional elements of control and dispensing with a totally digital control system, which facilitates the setting and monitoring of various parameters, depending on the application, using and comparing historic values to identify or analyze any errors.

- New box design, with increased instrument protection
- Graphic display 5" (240x128 pixel) for easier reading
- Control unit with full parameter access for complete monitoring
- Communication via Serial Port RS485 by MODBUS RTU/ASCII protocol for remote control interface
- Easy to set parameters for quick technical overview
- Multiple language menu for flexible operator interface
- Control unit has galvanized electrical and measuring insulation to ensure reliable performance
- CE/UL compliant to ensure full health and safety compliance

MEASURING RANGE

pH 0 – 14

ORP \pm 2000 mV

Chlorine 0 – 5 ppm

Chlorine and Chlorine dioxide

0 – 1/ 5/ 10/ 20/ 200 ppm

Free amperometric chlorine

0 – 1/ 5/ 10/ 20/ 200 ppm

Total potentiostatic chlorine

0 – 1/ 5/ 10/ 20/ 200 ppm

Combined chlorine^(*)

0 – 1/ 5/ 10/ 20/ 200 ppm

Turbidity^(*)

0 – 4/ 40/ 400/ 4000 NTU

(*) Using software

HYDRAULIC PROBE HOLDERS

Transparent modular probe holder PSS-Plexi

IN/OUT tubes 8x12 mm

Pressure 5 bar

Temperature 60 °C

MAIN BOARD

Graphic display 5" 20 letters x 4 lines

Power supply 100 – 240 Vac 50/60Hz

IP65 CABINET

Dimensions 440 x 740 x 175 mm

Material PP

INSTALLATION KIT INCLUDED

pH and ORP probes, amperometric chlorine cell

By-pass probe holder

pH and ORP buffer solutions

Brass brush

5" with 80 μ m cartridge





INTUITIVE ICONS AND CLEAR DISPLAY

Thanks to the high contrast image of the graphic display, and the easy to read and self explanatory icons that are used, the operator is guided step by step through the applications.

WITH AMPEROMETRIC PROBES

- for Chlorine
- for Chlorine and pH
- for Chlorine and pH and ORP
- for Chlorine and pH and Turbidity

WITH POTENZIOSTATIC PROBES

- for Chlorine and Chlorine dioxide
- for Chlorine and Chlorine dioxide and pH
- for Chlorine and Chlorine dioxide and pH and ORP

HYBRID MODEL

- Free amperometric chlorine, Total potentiostatic chlorine, Combined chlorine and pH and ORP
- Free amperometric chlorine, Total potentiostatic chlorine, Combined chlorine and pH and ORP and Turbidity

PH/ORP MODEL

- for pH and ORP

Kontrol Tekna panels

Kontrol Tekna panels benefit from the robust Tekna range of pumps, offering the professional pool operator peace of mind and a completeness of range.

- Professional parameter setting
- Proportional dosing
- Calibration process uses high quality pH and ORP probes
- Extra dosing available thanks to pH and chlorine relay
- Installation kit included
- Technical skill required
- Remote alarm relay
- Multi language menu
- Potentiostatic measurement of chlorine PPM value

TEKNA FEATURES

Compatible

The PVDF pump head that comes as standard offers complete compatibility for almost all chemicals that may be used in swimming pool water treatment. The ceramic ball valve which also comes as standard improves the pumping reliability and the chemical compatibility of the whole liquid end.

Reliable

Advanced design and manufacturing processes allows SEKO's diaphragm to have a unique life expectancy. Made of pure solid PTFE, the diaphragm is compatible with most chemicals and has been rigorously tested allowing SEKO to guarantee its diaphragms for 5 years that means routine diaphragm replacement is no longer needed.

MEASURING RANGE

pH 0 – 14

ORP \pm 1500 mV

Chlorine and Chlorine dioxide

0 – 0.5/ 1/ 2/ 5/ 10 / 20/ 200 ppm

Peracetic acid

0 – 500/ 2000/ 10.000/ 20.000 ppm

Hydrogen peroxide

0 – 500/ 1000/ 2000/ 10000/ 100000 ppm

HYDRAULIC PROBE HOLDERS

Transparent modular probe holder PSS-Plexi

IN/OUT tubes 8x12 mm

Pressure 5 bar

Temperature 60 °C

MAIN BOARD

Alphanumeric display 16 letters x 2 lines

Power supply 100 – 240 Vac 50/60Hz

IP65 PRE-ASSEMBLED PANEL-MOUNTED

Dimensions 700 x 420 x 10 mm

Material PVC

INSTALLATION KIT INCLUDED

pH and ORP probes, amperometric chlorine cell

By-pass probe holder

pH and ORP buffer solutions

Brass brush

5" with 80 μ m cartridge

Ceramic foot filter and FPM non return valve



Tekna TPR Panel

A **two solenoid driven dosing pump with control instruments pre-assembled panel-mounted system** that features integrated by-pass hydraulic probe holders and transparent filter housing.

Comes with pre-wired connections contained within a IP65 standard electrical box.

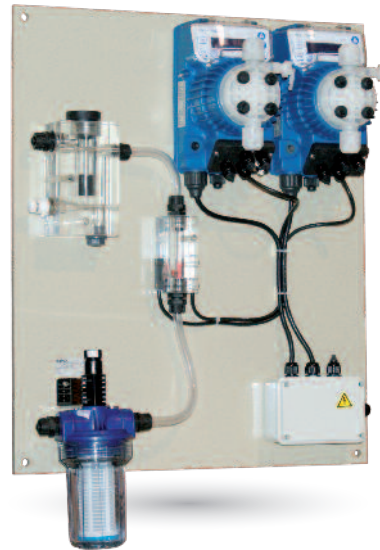
TEKNA TPR PANEL

- pH and ORP

POOL SIZE

(603) Indoor 150 – 600 m³; Outdoor 100 – 500 m³

(803) Indoor 300 – 1500 m³; Outdoor 200 – 1200 m³



PROPORTIONAL SOLENOID DRIVEN DOSING PUMPS

2 Tekna TPR 603 or 803 model with pH/ORP control meter built in

(603) Flow rate 4 – 8 l/h ; Pressure 2 – 12 bar

(803) Flow rate 20 – 110 l/h ; Pressure 0.1 – 5 bar

Wetted parts Body in PVDF ; Membrane in PTFE

Tekna TPR-TMP Panel

Offering a **broader range of parameter measurements**, Tekna TPR-TMP Panel is a **two solenoid driven dosing pump with control instruments pre-assembled panel-mounted system** that features integrated by-pass hydraulic probe holders and transparent filter housing.

Comes with pre-wired connections contained within a IP65 standard electrical box.

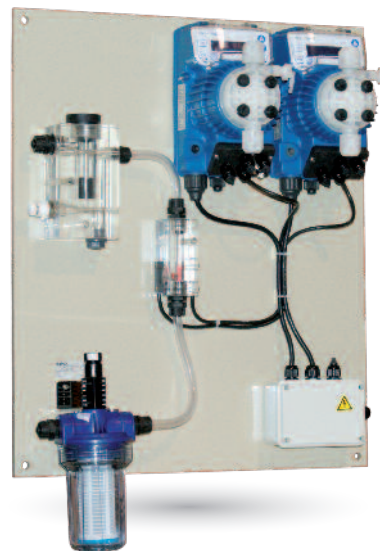
TEKNA TPR-TMP PANEL

- pH and ORP and Chlorine and Chlorine dioxide and Peracetic acid and Hydrogen peroxide

POOL SIZE

(603) Indoor 150 – 600 m³; Outdoor 100 – 500 m³

(803) Indoor 300 – 1500 m³; Outdoor 200 – 1200 m³



PROPORTIONAL SOLENOID DRIVEN DOSING PUMPS

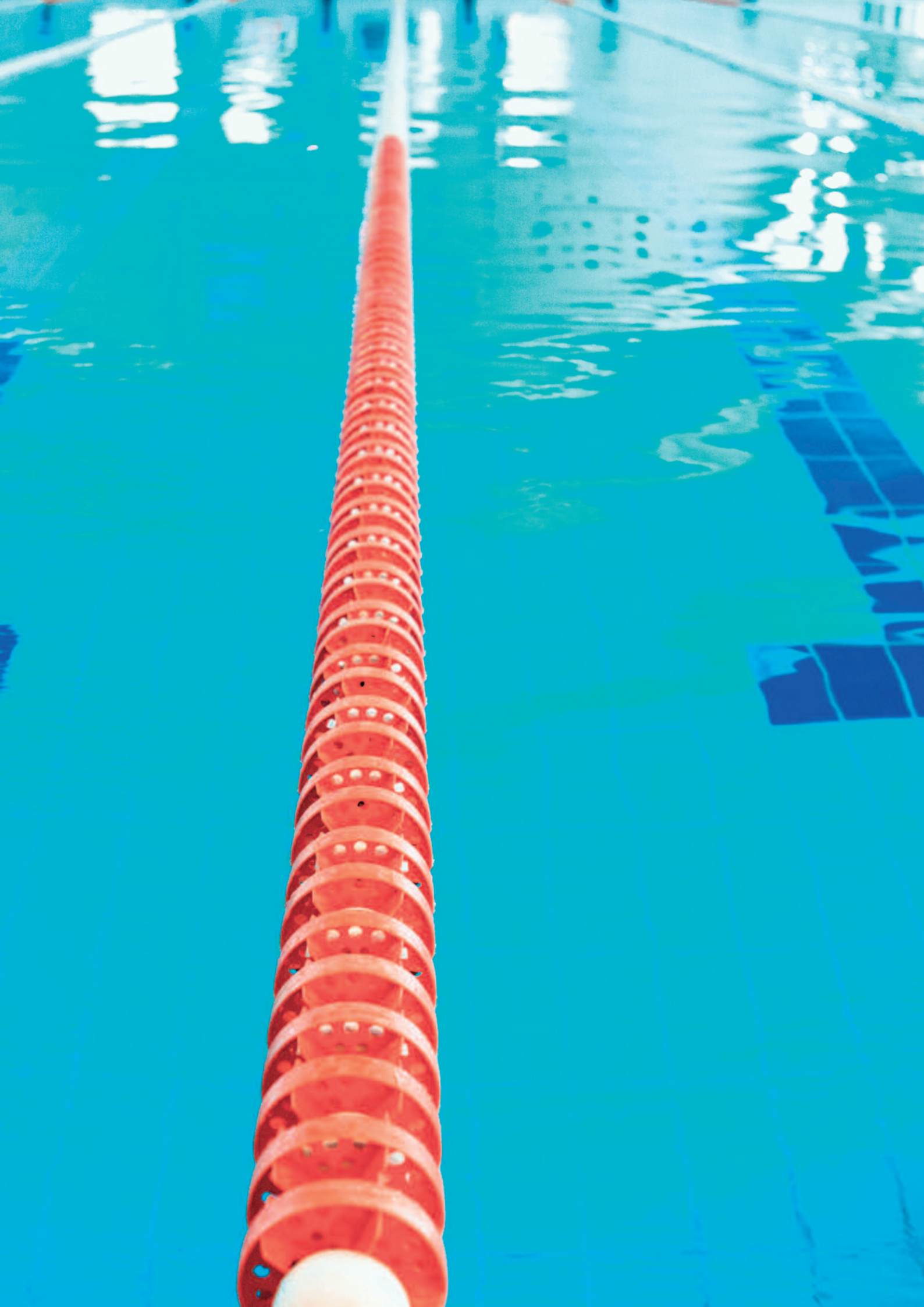
Tekna TPR 603 or 800 model with pH/ORP control meter built in

1 Tekna TMP 603 or 800 model with Chlorine, Hydrogen Peroxide or Peracetic acid control meter

(603) Flow rate 4 – 8 l/h ; Pressure 2 – 12 bar

(803) Flow rate 20 – 110 l/h ; Pressure 0.1 – 5 bar

Wetted parts Body in PVDF ; Membrane in PTFE



equipment for

Pools & Spa

page 30

Dosing pumps

P Series

Dynamik

Kronos

Invikta

Kompact

Tekna

Maxima

Spring

page 32

Controllers

Kontrol 50

Kontrol 42

Kontrol 100

Kontrol 500

page 33

Blowers - Side channel compressors

BL040

BL050

BL820

page 33

Pool Cleaning Station

Dosing pumps

A complete range of peristaltic, solenoid driven and motor driven dosing pumps for Swimming pool applications with options to meet any need.

P Series

Basic peristaltic pumps for residential above ground pools

MODELS

| | |
|-------|--------------------------------------|
| PE1.5 | Flow rate 1.5 l/h ; Pressure 0.5 bar |
| PE5 | Flow rate 5 l/h ; Pressure 0.5 bar |
| PE4 | Flow rate 4 l/h ; Pressure 0.5 bar |
| PE7 | Flow rate 7 l/h; Pressure 0.5 bar |



POOL SIZE Indoor 1 – 150 m³; Outdoor 1 – 110 m³

Dynamik

Advanced peristaltic pumps for seasonal dosing action or micro dosing application

MODELS

| | |
|-----|--|
| CK | Flow rate 4, 2, 1 l/h ; Pressure 1.5 bar |
| Pro | Flow rate 2.5 – 9750 ml/h ; Pressure 1.5 bar |



POOL SIZE Indoor 1 – 250 m³; Outdoor 1 – 110m³

Kronos FM

Professional peristaltic pumps with stepper motor for high accuracy dosing action

MODELS

| | |
|---------|-------------------------------------|
| 50 FM02 | Flow rate 2 l/h ; Pressure 3 bar |
| 50 FM10 | Flow rate 10 l/h ; Pressure 2 bar |
| 50 FM15 | Flow rate 15 l/h ; Pressure 0.1 bar |



POOL SIZE Indoor 1 – 280 m³; Outdoor 1 – 160 m³

Invikta

Basic solenoid driven dosing pumps for residential outdoor pools

MODELS

| | |
|---------|----------------------------------|
| KCL 633 | Flow rate 5 l/h ; Pressure 5 bar |
| KCL 632 | Flow rate 2 l/h ; Pressure 7 bar |



POOL SIZE Indoor 1 – 250m³; Outdoor 1 – 110m³

Kompact

Advanced solenoid driven dosing pumps for medium sized indoor and outdoor pools

MODELS

| | |
|---------|---|
| AML 200 | Flow rate 5 or 3 l/h ; Pressure 8 or 10 bar |
| AMM 200 | Flow rate 5 or 3 l/h ; Pressure 8 or 10 bar |



POOL SIZE Indoor 5 – 250 m³; Outdoor 5 – 110 m³

Tekna

Professional wall mounted solenoid driven dosing pumps for medium or large indoor and outdoor pools

MODELS

ANALOGUE AKL – DIGITAL TPG; TPR; TCK

VERSION

603 Flow rate 4 – 8 l/h ; Pressure 2 – 12 bar
 800 Flow rate 7 – 18 l/h ; Pressure 1 – 16 bar
 803 Flow rate 20 – 110 l/h ; Pressure 0.1 – 5 bar

POOL SIZE

Indoor 5 – 250 m³ ; Outdoor 5 – 110 m³
 Indoor 200 – 750 m³ ; Outdoor 150 – 650 m³
 Indoor 300 – 1500 m³ ; Outdoor 200 – 1200 m³



Maxima

Professional base mounted solenoid driven dosing pumps features new revolutionary electronic stroke length regulation for medium or large indoor and outdoor pools

MODELS

ANALOGUE MKL – DIGITAL MPG; MPR

VERSION

603 Flow rate 4 – 8 l/h ; Pressure 2 – 12 bar
 800 Flow rate 7 – 18 l/h ; Pressure 1 – 16 bar
 803 Flow rate 20 – 110 l/h ; Pressure 0.1 – 5 bar

POOL SIZE

Indoor 5 – 250 m³ ; Outdoor 5 – 110 m³
 Indoor 200 – 750 m³ ; Outdoor 150 – 650 m³
 Indoor 300 – 1500 m³ ; Outdoor 200 – 1200 m³



Tekba

Professional digital solenoid driven dosing pump with mechanical stroke length regulation for medium or large indoor and outdoor pools

MODELS

ANALOGUE EML – DIGITAL EMC; EMM

VERSION

603 Flow rate 4 – 8 l/h ; Pressure 2 – 12 bar
 800 Flow rate 7 – 18 l/h ; Pressure 1 – 16 bar
 803 Flow rate 20 – 110 l/h ; Pressure 0.1 – 5 bar

POOL SIZE

Indoor 5 – 250 m³ ; Outdoor 5 – 110 m³
 Indoor 200 – 750 m³ ; Outdoor 150 – 650 m³
 Indoor 300 – 1500 m³ ; Outdoor 200 – 1200 m³



Spring

Professional plunger motor driven dosing pumps for large indoor and outdoor pools

MODELS

MS1 Flow rate 220 l/h ; Pressure 7 bar
 Flow rate 310 l/h ; Pressure 7 bar
 MS0 Flow rate 30 l/h ; Pressure 5 bar
 Flow rate 42 l/h ; Pressure 5 bar

POOL SIZE

MS1 Indoor 4000 – 10000 m³ ; Outdoor 1000 – 6000 m³
 MS0 Indoor 400 – 2200 m³ ; Outdoor 300 – 1800 m³



Controllers

A complete range of control instruments for Swimming pool applications with the flexibility to meet every need.

Kontrol Flow 50

Advanced controller

MODELS

Flow rate 99999,99 l/sec



Kontrol 42

Advanced double parameter controller

MODELS

pH 0 – 14 ; ORP \pm 1500 mV

pH 0 – 14 ; ORP \pm 1500 mV; Flow rate 99999,99 l/sec



Kontrol 100

Professional single parameter controller

MODELS

pH 0 – 14

ORP \pm 1500 mV

Chlorine and Chlorine dioxide 0 – 0.5/ 1/ 2/ 5/ 10/ 20/200 ppm



Kontrol 500

Professional single parameter controller with data logger included

MODELS

pH 0 – 14

ORP \pm 1500 mV

Chlorine and Chlorine dioxide 0 – 0.5/ 1/ 2/ 5/ 10/ 20/200 ppm



Blowers - Side channel compressors

Blower system for Spa and Professional Swimming pool applications.

- We carry a complete line of high quality, quiet yet powerful replacement air blowers for your swimming pools and spas
- Air Blower provide circulation and therapeutic action for both pools and spas.



BL040

Single impeller, single and 3-Phase

Flow rate 145 m³/h

Pressure up to 200 mbar

Vacuum up to -170 mbar

Noise 63 dB A



BL050

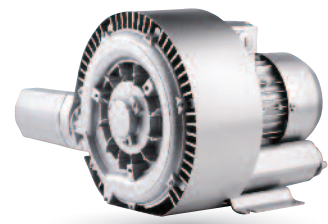
Single impeller
Single and 3-Phase

Flow rate 210 m³/h

Pressure up to 270 mbar

Vacuum up to -220 mbar

Noise 64 dB A



BL820

Double impeller 3-Phase

Flow rate 900 m³/h

Pressure up to 370 mbar

Vacuum up to -280 mbar

Noise 74 dB A

Pool Cleaning Station

Specifically designed for intensive cleaning and disinfection of floors and surfaces.

- It avoids water wastage contributing to environmental protection and cost optimization
- Offers effective mixing thanks to assisted calibration
- Works without electricity or compressed air





Accessories

page 36

Probes

pH

ORP

Chlorine

Temperature

Turbidity

Flow rate

page 38

Modular probe holder (Patented product)
and **By-Pass probe holders**

page 39

**Clamp saddles, Cables, Buffer solution pH/ORP and
5" Housings for filter cartridges**

page 40

**Filter cartridges, Water meter pulse sender
and Tanks**

page 41

Uncovered tank and Mixers

Accessories

SEKO has developed a full range of accessories to ensure technical installers have every element they need to deliver the most professional installation.

SPH pH probes

MODELS

| | |
|------------|--|
| SPH-1 1.5M | Range 2 – 12 pH ; Pressure 0 – 6 bar ; Body Epoxy ; Membrane Glass ; Connections Cable 1.5 m + BNC |
| SPH-1 6M | Range 2 – 12 pH ; Pressure 0 – 6 bar ; Body Epoxy ; Membrane Glass ; Connections Cable 6 m + BNC |
| SPH-2 | Range 2 – 12 pH ; Pressure 0 – 6 bar ; Body Epoxy ; Membrane Glass ; Connections S8 |
| SPH-3 WW | Range 2 – 12 pH ; Pressure 0 – 6 bar ; Body Glass ; Membrane Glass ; Connections S8 |



SRH ORP probes

MODELS

| | |
|-------------|--|
| SRH-1 1.5M | Range \pm 1000 mV ; Pressure 0 – 6 bar ; Body Epoxy ; Membrane Platinum wire ; Connections Cable 1.5 m + BNC |
| SRH-1 6M | Range \pm 1000 mV ; Pressure 0 – 6 bar ; Body Epoxy ; Membrane Platinum wire ; Connections Cable 6 m + BNC |
| SPH-1 6M AU | Range \pm 2000 mV ; Pressure 0 – 6 bar ; Body Epoxy ; Membrane Gold ; Connections Cable 6 m + BNC |
| SRH-3 PT | Range \pm 2000 mV ; Pressure 0 – 6 bar ; Body Glass ; Membrane Platinum wire ; Connections S8 |



CL Chlorine potentiostatic probes

Professional chlorine potentiostatic probe, that uses an amperometric cell and membrane cup.

MODELS

| | |
|--------|--|
| F-CL 2 | Range 0 – 10 ppm ; pH 4 – 12 ; Flow rate 30 l/h ; Temperature 45°C ; Pressure 0,5 bar ; Membrane M48 ; Electrolyte ECC1 ; Application fields Organic free chlorine |
| F-CL 3 | Range 0 – 10 ppm ; pH 4 – 11 ; Flow rate 30 l/h ; Temperature 45°C ; Pressure 0,5 bar ; Membrane M48 G ; Electrolyte ECS1 Gel ; Application fields Inorganic free chlorine |



GPC Grounding Pipe Coupling

To obtain the best performance in pH and Redox measurements when using Tekna TPR pump with electrical grounding SEKO recommends using the GPC Series Grounding Pipe.

MODELS

GPC-63 DN63 diameter connection to glue tubes to PVC body

GPC-50 DN50 diameter connection to glue tubes to PVC body

FEATURES Pressure 3 bar ; Temperature 50°C



PT Temperature probes

MODELS

PT 100V Range 0 – 100°C ; Pressure 0 – 7 bar ; Body Pyrex ;
Connections 5 m 3-wire cable

PT 100V PG Range 0 – 100°C ; Pressure 0 – 7 bar ; Body Pyrex ;
Connections 6 m 3-wire cable

PT 100 NUT Range 0 – 100°C ; Pressure 0 – 7 bar ; Body PP ;
Connections 1 m 2-wire cable

RNC Pressure 0 – 7 bar ; Body AISI 304



S461/LT Turbidimetric probes

The measurement principle is based on the deviation of light produced by suspended particles in the liquid.

FEATURES Measure 0,02 – 10 FTU/NTU ; Pressure 0 – 4 bar ; Temperature 0 – 60°C

BODY material PVC special optical glass and Viton threaded connection 1" GAS

PROJECTOR AND SENSORS Scattering at 90° Light absorption with 10 m cable



SFW Paddlewheel flow sensor

The SFW paddle wheel flow sensor is designed to be used with every kind of solid-free liquid. The sensor offers highly consistent and repeatable measurements of flow from 0.15 m/s (0.5 ft/s) producing a frequency output signal.

MODELS

SFW-1 Size DN 100 – 4"

SFW-2 Size DN 200 – 8"

FLUID Speed Range 0.15 to 8m/s
[0.5 to 25ft/s]

MATERIALS

Sensor body PVC-C ;

O-rings FPM ; **Rotor** ECTFE (Halar®) ;

Shaft Ceramic (Al₂O₃) ; **Bearings**

Ceramic (Al₂O₃) ;

IP65 protection degree



PSS-PLEXI Modular probes holder (Patented product)

Professional modular probe holder with amperometric cell for Free Chlorine measurement.

MODELS

- Flux / pH / ORP)
- Flux /pH / Amperometric chlorine
- Flux / pH / ORP/ Amperometric chlorine
- Flux /pH / Potentistatic chlorine

Connection In/OUT 8x12 mm (tube)
 Probes connection 24 mm
 Hydraulic By-pass
 Max. Temperature 60°C
 Max. Pressure 5 bar
 Material Plexiglas without color



By-pass probe holder

By-pass probe holder for quick installation pH, ORP and Temperature probes.

PSS 7 SINGLE Connection process By-Pass ; No. Probes 1 ; Temperature 0 – 40°C ; Pressure 0 – 6 bar ; Material PP + SAN



By-pass probe holder

By-pass probe holder for quick installation pH, ORP and Temperature probes.

MODELS

PSS 8-A Single Connection process By-Pass ; No. Probes 3 ; Diameter 12 mm ; Temperature 0 – 40°C ; Pressure 0 – 5 bar ; Material PP + Transparent SAN

PSS 8-A1 Single Connection process By-Pass ; No. Probes 3 ; Diameter 12 mm ; Temperature 0 – 40°C ; Pressure 0 – 2 bar ; Material PP + Black PP

PSS 8-A Single Connection process By-Pass ; No. Probes 1 ; Diameter 33, 35 or 42 mm ; Temperature 0 – 40°C ; Pressure 0 – 5 bar ; Material PP + Black PP

PSS 8-A Single Connection process By-Pass ; No. Probes 1 ; Diameter 24 mm ; Temperature 0 – 40°C ; Pressure 0 – 5 bar ; Material PP + Transparent SAN



Insertion probe holder

Pressurized probe holder for small residential pools.

PSS3 Connection process 1/2" G.M. ; Probes connection PG 13,5 or Ø 12 mm ; Temperature 0 – 60°C ; Pressure 0 – 7 bar ; Material PVC

SPP Connection process 1" G.F. ; Probes connection PG 13,5 ; Temperature 0 – 60°C ; Pressure 0 – 16 bar ; Material PVC



Clamp saddles (for paddlewheel flow sensor)

FOR SFW-1 Size DN 100 – 4" / **FOR SFW-2** Size DN 200 – 8"

MATERIALS Body PP (Polypropylene) ; **Gasket** FPM



CE cables with S7 heads (for probes)

MODELS

CE5B Length 5 mt. ; **Type of cable** Mod. RG58 5 mm ; **Terminal block** Soldered BNC

CE10B Length 10 mt. ; **Type of cable** Mod. RG58 5 mm ; **Terminal block** Soldered BNC



CC15 cables (for paddlewheel flow sensor)

MODELS Length 15 mt.

FEATURES Resistance 130 Ohm/Km \pm 5% ; **Temperature** -15 – 70°C ; **Capacity Wire/Shield** 150 pF/m ; **Capacity Wire/Wire** 80 pF/m ; **Max Voltage** 49V ; **Nominal section** 8mm²



Certified buffer solutions

Complete buffer solution range for professional calibration.

MODELS

| | |
|------------------|---|
| KIT ST | pH 4.00 and 7.00 ; Quantity 70 cc each pH 4.00 and 7.00 ; ORP 465 mV ; Quantity 70 cc each |
| ST PH 4 | pH 4.00 ; Temperature 20 °C ; Quantity 250 ml |
| ST PH 7 | pH 7.00 ; Temperature 20 °C ; Quantity 250 ml |
| ST PH 7 | pH 9,22 ; Temperature 20 °C ; Quantity 250 ml |
| ST RX 465 | ORP 465 mV ; Temperature 25 °C ; Quantity 250 m |



Housings (for filter cartridges)

MODELS Minor 5" **Pressure** up to 8 bar ; **Flow rate** up to 120 L/min ;
Temperature 2 – 40 °C

MATERIALS Non-toxic materials ; **Head Loaded** PP ; **IN/OUT threaded inserts** Brass ;
Cup SAN ; **O-Ring** NBR



Filter cartridges

MODELS RLN 20µm Temperature 2 – 40 °C / RLN 80µm Temperature 2 – 40 °C

MATERIALS Non-toxic materials ; **Filtering** Nylon (polyamide) ; **External supports** PP ; **Cup** PP ; **Seals** EPDM



Faucet

MODELS Connections IN ½ Gas F – OUT ½ Gas M ; **Material** Grey PVC- UC Body



TC1 Threaded water meters

Single-jet water meters with pulse sender, dry dial and roller reading. Suitable for cold water up to 30° C.

MODELS

25 MM / 1" 4 pulse/L or 1 pulse/L Max Flow (short period) 7 m³/h ; Nominal Flow 3,5 m³/h ; Min Flow (accuracy ±5%) 70 l/h

50 MM / 2" 4 pulse/L or 1 pulse/L Max Flow (short period) 30 m³/h ; Nominal Flow 15 m³/h ; Min Flow (accuracy ±5%) 450l/h



FC Flanged water meters

Woltmann series water meter with dry dial reading and pulse sender. Suitable for cold water up to 30°C.

MODELS

DN 80 / 3" Max Flow (short period) 80 m³/h ; Nominal Flow 40 m³/h ; Min Flow (accuracy ±5%) 0,7 m³/h

DN 100 / 4" Max Flow (short period) 120 m³/h ; Nominal Flow 60 m³/h ; Min Flow (accuracy ±5%) 1,2 m³/h



SER Tanks in polyethylene

Our tanks are designed to be assembled with dosing systems, with mixers and motor driven pumps or solenoid driven dosing pumps. All are made from food-safe polyethylene, and are resistant to almost all chemicals normally encountered.

MODELS

| | | | |
|------|------------------------|------------------|----------|
| 50 | Capacity 50 Litres ; | Height 45,5 cm ; | Ø 40 cm |
| 100 | Capacity 100 Litres ; | Height 64 cm ; | Ø 46 cm |
| 250 | Capacity 250 Litres ; | Height 87 cm ; | Ø 60 cm |
| 300 | Capacity 300 Litres ; | Height 95 cm ; | Ø 67 cm |
| 500 | Capacity 500 Litres ; | Height 119 cm ; | Ø 76 cm |
| 1000 | Capacity 1000 Litres ; | Height 122 cm ; | Ø 109 cm |



SML Reinforcement

Tank reinforcement made of PVC (20 mm thick) to be used to install mixers and motor driven pumps or solenoid driven dosing pumps on SER series tanks.

MODELS

| | | | |
|------|---------------------|-----|--------------------|
| 100 | Tank model SER 100 | 250 | Tank model SER 250 |
| 300 | Tank model SER 300 | 500 | Tank model SER 500 |
| 1000 | Tank model SER 1000 | | |



Uncovered tanks in polyethylene

Designed to contain our SER series tanks. Material food-safe polyethylene.

MODELS

| | | | |
|-------|-----------------------|------------------|----------|
| T150 | Tank model SER 100 ; | Height 75,5 cm ; | Ø 51 cm |
| T300 | Tank model SER 250 ; | Height 87,5 cm ; | Ø 67 cm |
| T400 | Tank model SER 300 ; | Height 99,0 cm ; | Ø 72 cm |
| T800 | Tank model SER 500 ; | Height 120 cm ; | Ø 90 cm |
| T1500 | Tank model SER 1000 ; | Height 134 cm ; | Ø 122 cm |



Mixers

Mixers with 0.12 kW single phase electric motors, either slow (200 rpm) or fast (1400 rpm), flange attachment, shaft and propeller in PVC.

MODELS

Slow mixers (200 RPM)

Tank model SER 300 ; Shaft 900 mm ; Propeller 220 mm

Tanks model SER 500 / 1000 ; Shaft 1100 mm ; Propeller 220 mm

Fast Mixers (1400 rpm)

Tank model SER 300 ; Shaft 900 mm ; Propeller 220 mm

Tanks model SER 500 / 1000 ; Shaft 1100 mm ; Propeller 220 mm



Your Choice, Our Commitment

People choose to do business with SEKO for one or more reasons, but ultimately it is their choice, and therefore they merit our commitment. "Our commitment" is total and not only to our customers, but also to each other and the Company's to its employees.

Vision

**TO BE YOUR PARTNER OF CHOICE FOR
DOSING SOLUTIONS, GLOBALLY**

SEKO, is a passionate, dedicated Global Family of Professionals. We listen to each of our Partners and are committed to deliver the right solution in the Hygiene, Water Treatment and Industrial Process markets.

Values

**MUTUAL RESPECT, QUALITY AND
SPIRIT OF COLLABORATION**

MUTUAL RESPECT

Mutual Respect because doing business is about being able to generate trust between Customer and Supplier. We'll deliver against our commitments, on time and in a transparent fashion, so you know can plan for your own business needs.

QUALITY

Quality for SEKO is a 360° reality. It covers not only the design, development, production and delivery of our products and solutions but it runs through the core professionalism of our teams.

SPIRIT OF COLLABORATION

Spirit of Collaboration is fundamental to our success and SEKO prides itself on how we work as a worldwide team, blending multiple country teams and functions to bring solutions to a Customer request or market need from an idea to the real world in very short time, across our global presence and beyond.



Your Choice, Our Commitment

In the modern Globalised world, being a privately owned Company has significant benefits especially for our Customers, our Partners. For over 40 years, SEKO has developed a Global organisation able to take the longer view, manage the pressure of the now, and to plan for the long term, delivering true Partnership for our Customers, with transparency and mutual respect for each other.

Whether it's for our reknown flexibility, our attention to detail, the high-quality products, or just the way we do business, we understand that it's Your Choice to do business with us. It is Our Commitment to fulfill your needs wherever you, our Customers are.



For more information about our portfolio, worldwide locations, approvals, certifications, and local representatives, please visit www.seko.com

As part of a process of on-going product development, SEKO reserves the right to amend and change specifications without prior notice. Published data may be subject to change.

© SEKO, Layout and origin: Italy, 850001-SWP_en_int, 09.2017

The SEKO logo, consisting of the word "seko" in a bold, lowercase, blue sans-serif font. The letters are closely spaced and have a clean, modern appearance.